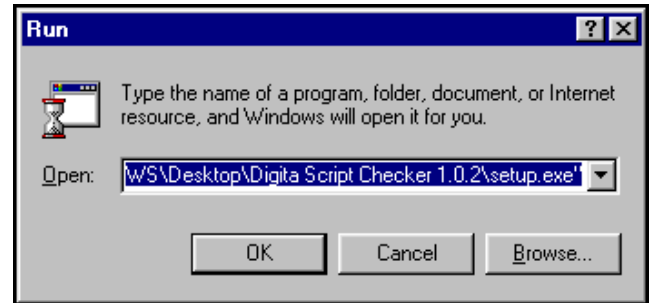


Digita Script Checker version 1.0.2

Use the Digita Script Checker to locate tags that may cause your script to run incorrectly on cameras compatible with DigitaScript version 1.5. The script checker won't correct the script for you, but at least you'll know what you need to change to make your script compatible with DigitaScript v1.5 compatible products.

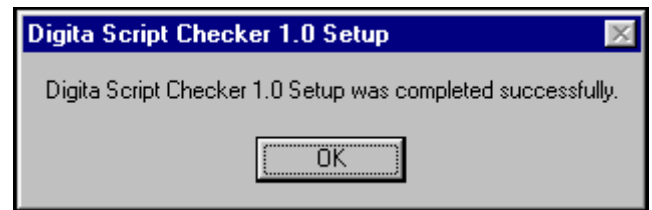
Installing the Script Checker

1. **Select Run... from the Start menu.**
 - The Run dialog box will appear.
2. **Click the Browse... button.**
 - The Browse dialog box will appear
3. **Select setup.exe from the Digita Script Checker 1.0.2 folder, then click Open.**
4. **Click OK in the Run dialog box to launch the installer**
5. **Follow the instructions on the installer screens.**



The following dialog box appears when the checker has been successfully installed.

6. **Click OK.**



Running the Script Checker

1. **Select Digita Script Checker from the Programs folder in the Start menu.**
 - The script checker may be in another directory if the default install settings weren't selected.
2. **Click Open Script.**
 - The Open dialog box will appear.
3. **Select the script file you want to check in the Open dialog box, then click Open.**
 - Any compatibility problems and the lines on which they appear will be posted in the script checker's dialog box.

When the Digita Script Checker dialog box appears...

